

RECORDED 00 JUL 12 AM 10:05  
CABINET A SLIDE 602-4

DOUGLAS B. HOLMES, CLERK OF COURT

PROPERTY IS SUBJECT TO ALL EASEMENTS, RIGHTS AND RESTRICTIONS OF RECORD OR ON THE GROUND

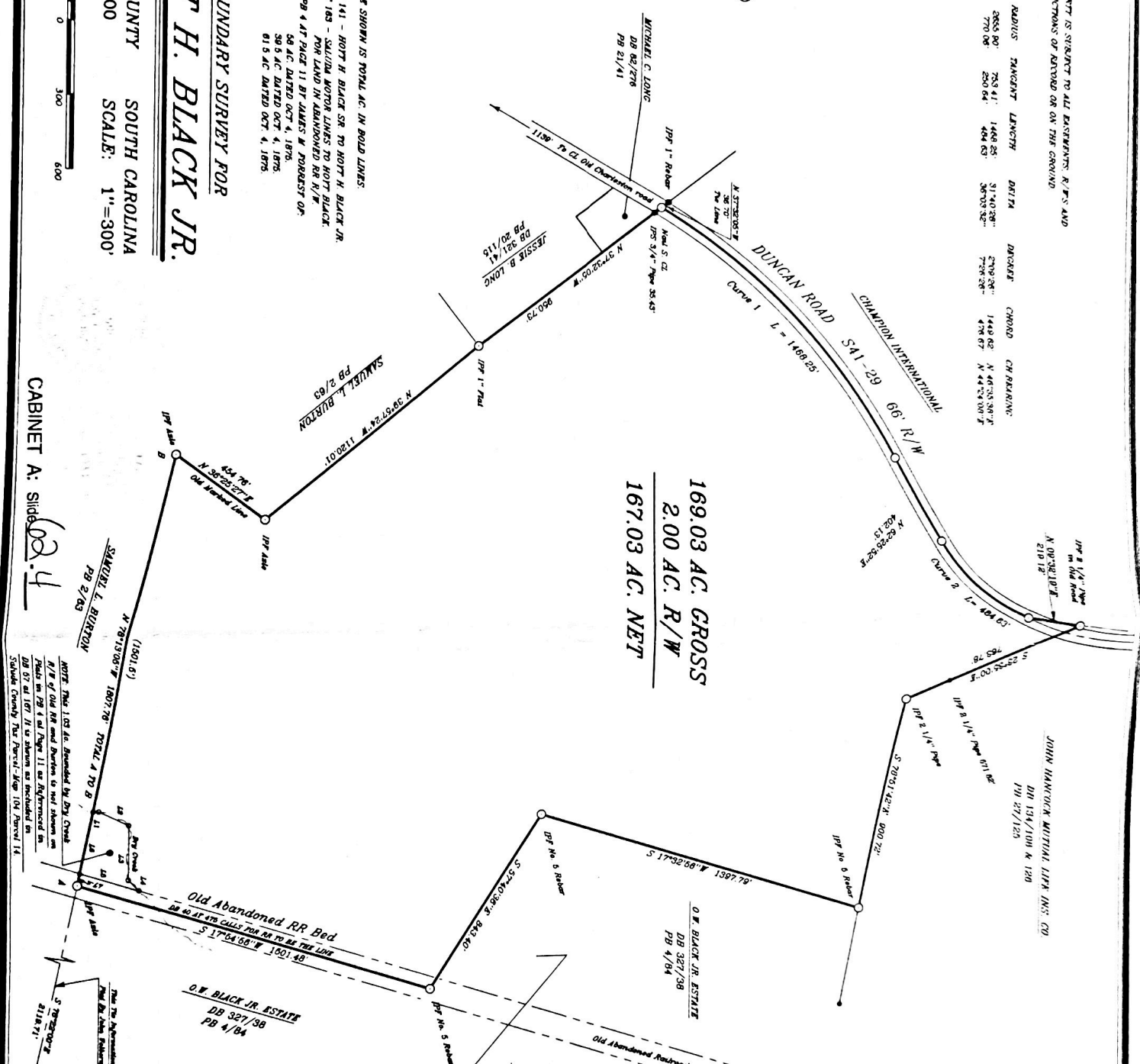
CURVE	RADIUS	TANGENT LENGTH	DELTA	ARC LENGTH	CHORD	CHORD BEARING
C1	2855.80'	783.41'	14.68 28°	3114.39'	2709.28'	144.06° N 49°25'38" W
C2	2770.00'	230.84'	4.84 63°	3070.32'	2721.25'	47.67° N 44°25'00" E

**HOYT H. BLACK JR.**  
BOUNDARY SURVEY FOR  
SALUDA COUNTY SOUTH CAROLINA  
MAY 23, 2000 SCALE: 1"=300'



NOTE: ACREAGE SHOWN IS TOTAL AC. IN BOUND LINES.  
REF. DB 74 AT 141 - HOYT H. BLACK SR. TO HOYT H. BLACK JR.  
DB 104 AT 183 - SALUDA NORTH LINES TO HOYT H. BLACK.  
PLATS IN PG 4 AT PAGE 11 BY JAMES W. JOHNSON OF  
S.C. AC. DATED OCT 4, 1876.  
S.C. AC. DATED OCT 4, 1876.  
O.S. AC. DATED OCT 4, 1876.

**169.03 AC. GROSS**  
**2.00 AC. R/W**  
**167.03 AC. NET**



CABINET A: Slide 602-4

NOTE: THIS 1.03 AC. BOUNDARY BY DAY CHASE  
R/W OF OLD RR AND BOUNDARY TO NEI SHOWN ON  
PLAT IN PG 4 AT PAGE 11 AS DIFFERENT IN  
DB 121 AT 187. IT IS SHOWN AS INCLUDED IN  
SALUDA COUNTY. THE PERCENTAGE 104 PERCENT 14

I HEREBY STATE THAT TO THE BEST OF MY KNOWLEDGE  
INFORMATION AND BELIEF THE SURVEY SHOWN HEREON  
IS MADE IN ACCORDANCE WITH THE REQUIREMENTS  
OF THIS STATUTE STRAIGHTLY MEASURED FROM THE POINTS  
OR DATA INDICATED IN SOUTH CAROLINA AND MEETS  
ALL OTHERS THE REQUIREMENTS FOR CLASS 1 SURVEY  
AS SPECIFIED

TODD SURVEYS, INC.  
208 DEWITT HWY.  
SALUDA, S.C. 29138  
864-445-7892

COURSE	BEARING	DISTANCE
L1	N 00°45'00" E	22.01'
L2	N 89°30'30" E	128.00'
L3	N 00°00'00" E	22.00'
L4	N 89°30'30" E	128.00'
L5	S 17°54'30" W	847.72'
L6	N 79°13'00" W	250.87'
L7	N 79°13'00" W	50.25'

REF. PLAT FOR O.W. BLACK JR. ESTATE BY JOHN H. WILSON  
DATED MAY 31, 1898 OF 158.53 AC.  
REF. DEEDS TO O.W. BLACK JR. IN DB 40 AT P. 478 & DB 40 AT 455

