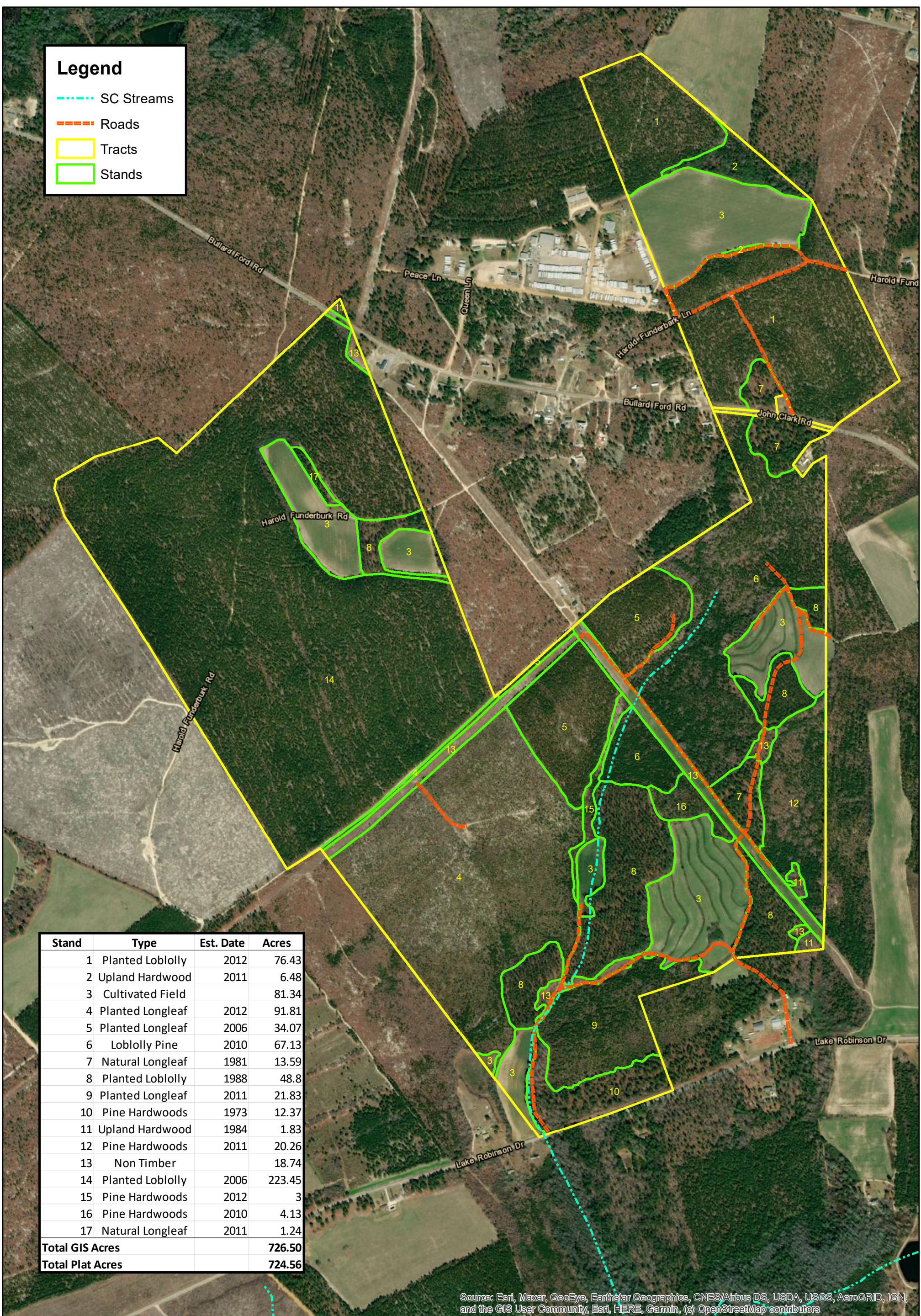


### Legend

- - - - SC Streams
- - - - Roads
- Tracts
- Stands



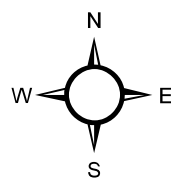
| Stand                   | Type             | Est. Date | Acres         |
|-------------------------|------------------|-----------|---------------|
| 1                       | Planted Loblolly | 2012      | 76.43         |
| 2                       | Upland Hardwood  | 2011      | 6.48          |
| 3                       | Cultivated Field |           | 81.34         |
| 4                       | Planted Longleaf | 2012      | 91.81         |
| 5                       | Planted Longleaf | 2006      | 34.07         |
| 6                       | Loblolly Pine    | 2010      | 67.13         |
| 7                       | Natural Longleaf | 1981      | 13.59         |
| 8                       | Planted Loblolly | 1988      | 48.8          |
| 9                       | Planted Longleaf | 2011      | 21.83         |
| 10                      | Pine Hardwoods   | 1973      | 12.37         |
| 11                      | Upland Hardwood  | 1984      | 1.83          |
| 12                      | Pine Hardwoods   | 2011      | 20.26         |
| 13                      | Non Timber       |           | 18.74         |
| 14                      | Planted Loblolly | 2006      | 223.45        |
| 15                      | Pine Hardwoods   | 2012      | 3             |
| 16                      | Pine Hardwoods   | 2010      | 4.13          |
| 17                      | Natural Longleaf | 2011      | 1.24          |
| <b>Total GIS Acres</b>  |                  |           | <b>726.50</b> |
| <b>Total Plat Acres</b> |                  |           | <b>724.56</b> |

Source: Esri, Maxar, GeoEye, Earthstar Geographics, CNES/Airbus DS, USDA, USGS, AeroGRID, IGN, and the GIS User Community, Esri, HERE, Garmin, (c) OpenStreetMap contributors

Owners and owner's agent make no claims as to the accuracy of this map.



**SOUTHEASTERN FORESTRY**  
Managing your forests for the future



**Timber Type Map**  
**Lake Roberson Road Tract**  
**TMS# 182--041 & 183--009**  
**Chesterfield County, SC**  
**726.5± GIS Acres. 725.56 Plat Acres**  
**March, 2021**