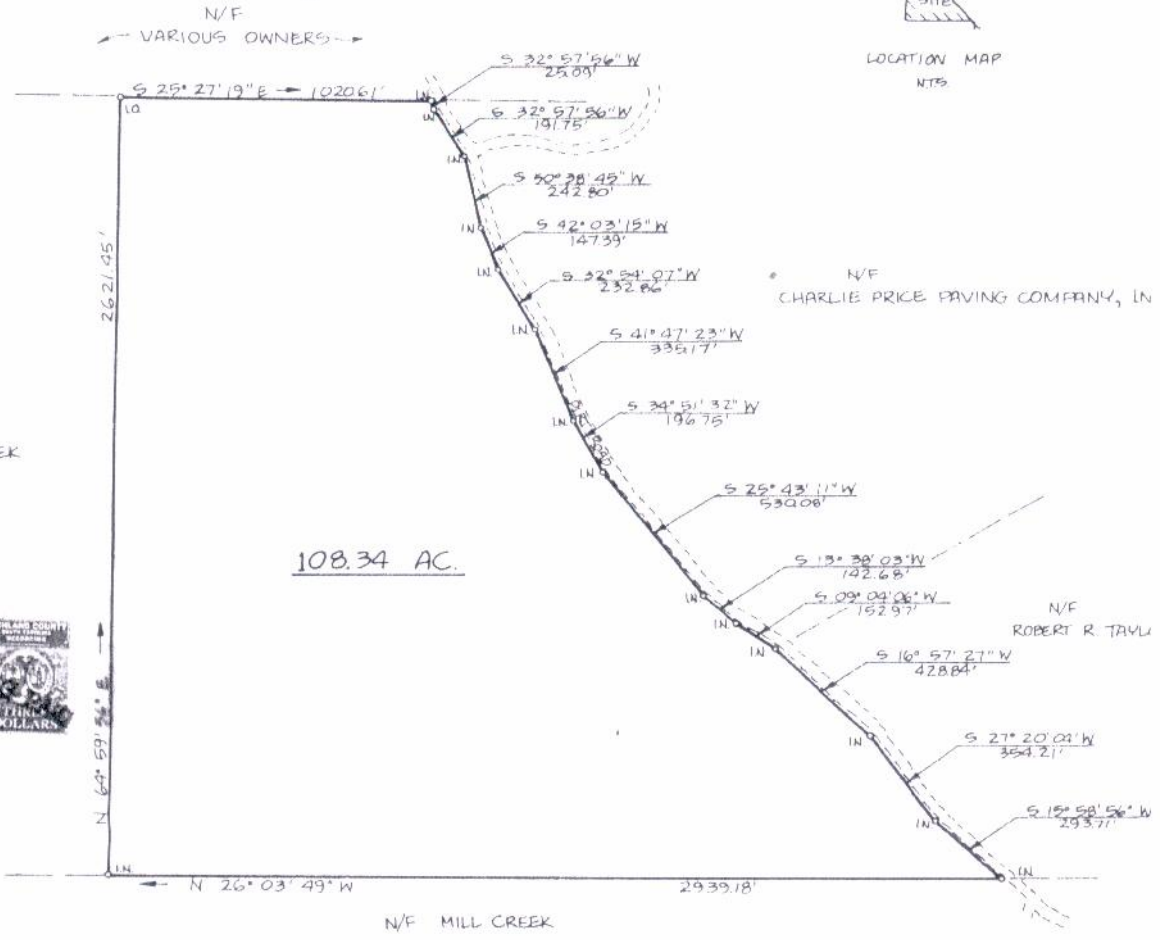
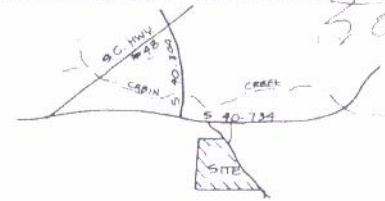


52/2326

500



1988 JUL -7 PM 4: 29



The Subdivision Plat shown hereon has been found to be exempt from the Richland County Subdivision Regulations.

1 July 1988
Julius E. Crocker
Name, Title
Planning / zoning Adm.
No Building Permits Will be Issued until public Road Frontage is Provide

PLAT PREPARED FOR
CHARLIE PRICE PAVING COMPANY, INC.

LOCATED IN RICHLAND COUNTY, SOUTH CAROLINA

SCALE: 1" = 400'



DATE: JUNE 6-30-88

REFERENCE:

A PLAT FOR MILL CREEK, A SOUTH CAROLINA GENERAL PARTNERSHIP, BY ASSOCIATED ENGINEERS & SURVEYORS, INC. ON AUGUST 14, 1985, LAST REV 6-29-88, THE SAME BEING TRACT "B-1".

CERTIFICATION: I HEREBY CERTIFY THIS TO BE A PLAT OF TRUE AND CORRECT SURVEY MADE ON THE GROUND AND THE RATIO OF PRECISION OF THE FIELD SURVEY IS AT LEAST 1/5000 AS SHOWN HEREON AND THE AREA WAS DETERMINED BY THE COORDINATE METHOD OF AREA CALCULATION.

Pms. 21200-1-01 (Partner)

Larry W. Smith
LARRY W. SMITH SCRLS. # 3724

BOOK 52 PAGE 2326

ASSOCIATED ENGINEERS & SURVEYORS, INC.

118 STATE STREET WEST COLUMBIA, S.C.