



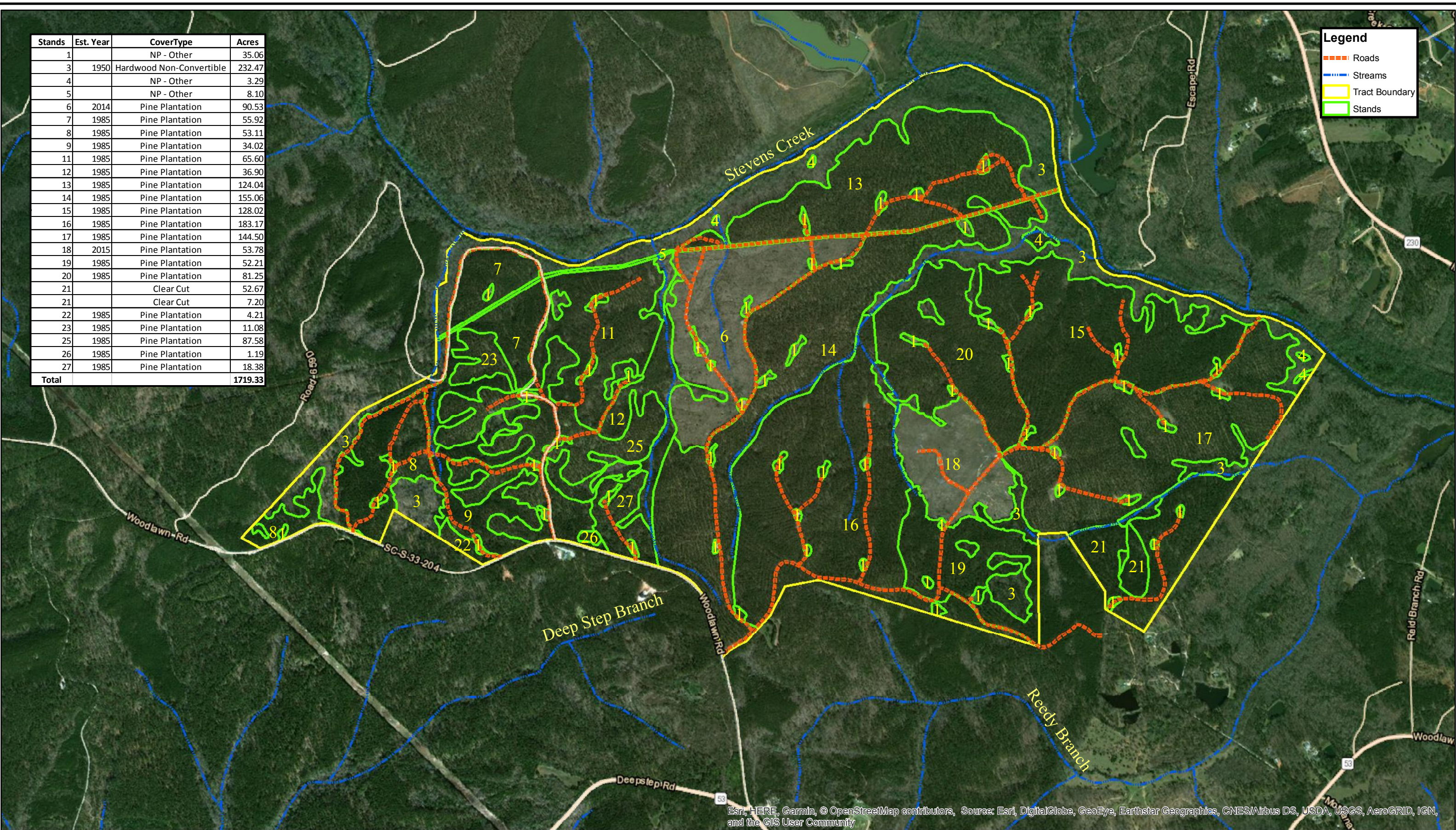


Stands	Est. Year	CoverType	Acres
1		NP - Other	35.06
3	1950	Hardwood Non-Convertible	232.47
4		NP - Other	3.29
5		NP - Other	8.10
6	2014	Pine Plantation	90.53
7	1985	Pine Plantation	55.92
8	1985	Pine Plantation	53.11
9	1985	Pine Plantation	34.02
11	1985	Pine Plantation	65.60
12	1985	Pine Plantation	36.90
13	1985	Pine Plantation	124.04
14	1985	Pine Plantation	155.06
15	1985	Pine Plantation	128.02
16	1985	Pine Plantation	183.17
17	1985	Pine Plantation	144.50
18	2015	Pine Plantation	53.78
19	1985	Pine Plantation	52.21
20	1985	Pine Plantation	81.25
21		Clear Cut	52.67
21		Clear Cut	7.20
22	1985	Pine Plantation	4.21
23	1985	Pine Plantation	11.08
25	1985	Pine Plantation	87.58
26	1985	Pine Plantation	1.19
27	1985	Pine Plantation	18.38
Total			1719.33

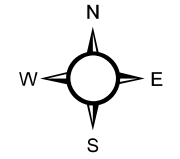
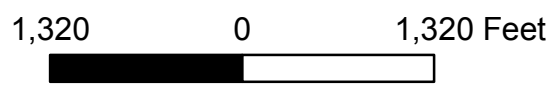
Legend

-  Roads
-  Streams
-  Tract Boundary
-  Stands



Esri, HERE, Garmin, © OpenStreetMap contributors, Source: Esri, DigitalGlobe, GeoEye, Earthstar Geographics, CNES/Airbus DS, USDA, USGS, AeroGRID, IGN, and the GIS User Community

Owners and owner's agents make no claims as to the accuracy of this map.



Stevens Creek
 Tract Number: 4350
 1719.33± Acres
 Edgefield and McCormick Counties, SC
 December, 2017